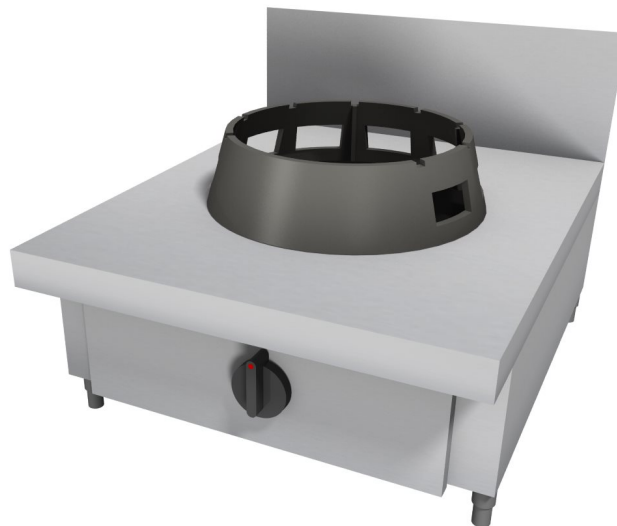


## Wok stove, LS model.

LS - CC/01 - 01060060BB



Model without support or on open stand h 850 mm. Cooking top made of stainless steel AISI 304 18/10 (mm. 2,5 thick), reinforced with welded pipes (PL). Splashback h 200 mm (AL). Structure made entirely of stainless steel AISI 304 18/10. Removable drip pans (PG). Stainless steel AISI 304 18/10 adjustable feet. Atmospheric burners C 9,5 kW - T 14,0 kW - S 21,0 kW - P 3,0 kW - M 4,5 kW - G 7,5 kW. Optional: Pre-mixing radiant infra-red burner "B" 23,0 kW - Watt 110,0 - Ac230V/50Hz.

#### TECHNICAL DATA

<b>Width (mm)</b>	600
<b>Height (mm)</b>	275
<b>Depth (mm)</b>	600
<b>Weight (Kg)</b>	35
<b>Volume (m<sup>3</sup>)</b>	0.1
<b>Burners</b>	1

#### EXTRA DATA

Model "C", "T" 175 mm, model "S" 220 mm

Removable drip pans

#### FORHANDLER:



**FastShop.dk**  
**35816700**

**STORKØKKEN UDSTYR**